

# SWISS MIDDLE EAST – DUBAI

## SME Engineering GmbH – Switzerland

### Prequalification Document

Riyadh Metro  
Riyadh, Saudi Arabia

Haskins Biotech Campus  
San Francisco, US

Maze Tower  
Dubai, UAE

1 Yonge St  
Toronto, Canada

Webb House  
London, UK

Horizon Tower  
Dubai, UAE

Clock Tower  
Makkah, Saudi Arabia

Senegal Airport  
Dakar, Senegal

Aloft Hotel  
Abu Dhabi, UAE

Modern Times Hotel  
Geneva, Switzerland

The Spring District  
Washington, USA

Rose Tower  
Dubai, UAE

Dubai Metro  
Dubai, UAE

250M Street  
Washington DC, US

KAFD 4.10  
Riyadh, Saudi Arabia

Qatar International Islamic Bank  
Doha, Qatar

Al Rajhi Tower  
Riyadh, Saudi Arabia

King Abdullah Foundation  
Riyadh, Saudi Arabia

General Aviation Jeddah Airport  
Jeddah, Saudi Arabia

Mixed Use Facility Project  
Toronto, Canada

Abito Apartments  
Manchester, UK

Four Seasons Hotel  
Abu Dhabi, UAE

Acico Twin Towers  
Dubai, UAE

Beach Towers  
Abu Dhabi, UAE

Water Fall Mall  
Kuwait City, Kuwait

KAFD 2.10  
Riyadh, Saudi Arabia

KAFD 4.12  
Riyadh, Saudi Arabia

Webb House  
London, UK

Waqood Tower  
Doha, Qatar

The Binary Office Tower  
Dubai, UAE

King Abdullah Children Hospital  
Jeddah, Saudi Arabia

Reverso  
Geneva, Switzerland

Capital Plaza  
Abu Dhabi, UAE

Ethad Towers  
Abu Dhabi, UAE

Essex Crossing  
New York, USA

Park Place  
Dubai, UAE



## **SWISS MIDDLE EAST** **Prequalification Document**



## Table of Contents

1. Company Data
2. Company Organization Chart
3. Company Profile
4. Clients
5. Services
6. Company Employees
7. Office Facilities and Equipment's
8. SME Drawings Specimen
9. SME Major Projects





## 1- Company Data



## 1- Company Data

Company Name : Swiss Middle East  
Ownership : Sole Establishment  
License Type : Professional License  
License Number : 561852  
License Date : 29.09.2004  
Dubai office : P.O.Box 33977

Dubai,  
United Arab Emirates  
Tel: +971 4 2896672  
Fax: +971 4 2896673

Switzerland Office :SME Engineering GmbH  
Luzernerstrasse 49 – 5630 Muri AG  
Switzerland  
E-mail: [me@mecweng.com](mailto:me@mecweng.com)  
Website: [www.mecweng.com](http://www.mecweng.com)

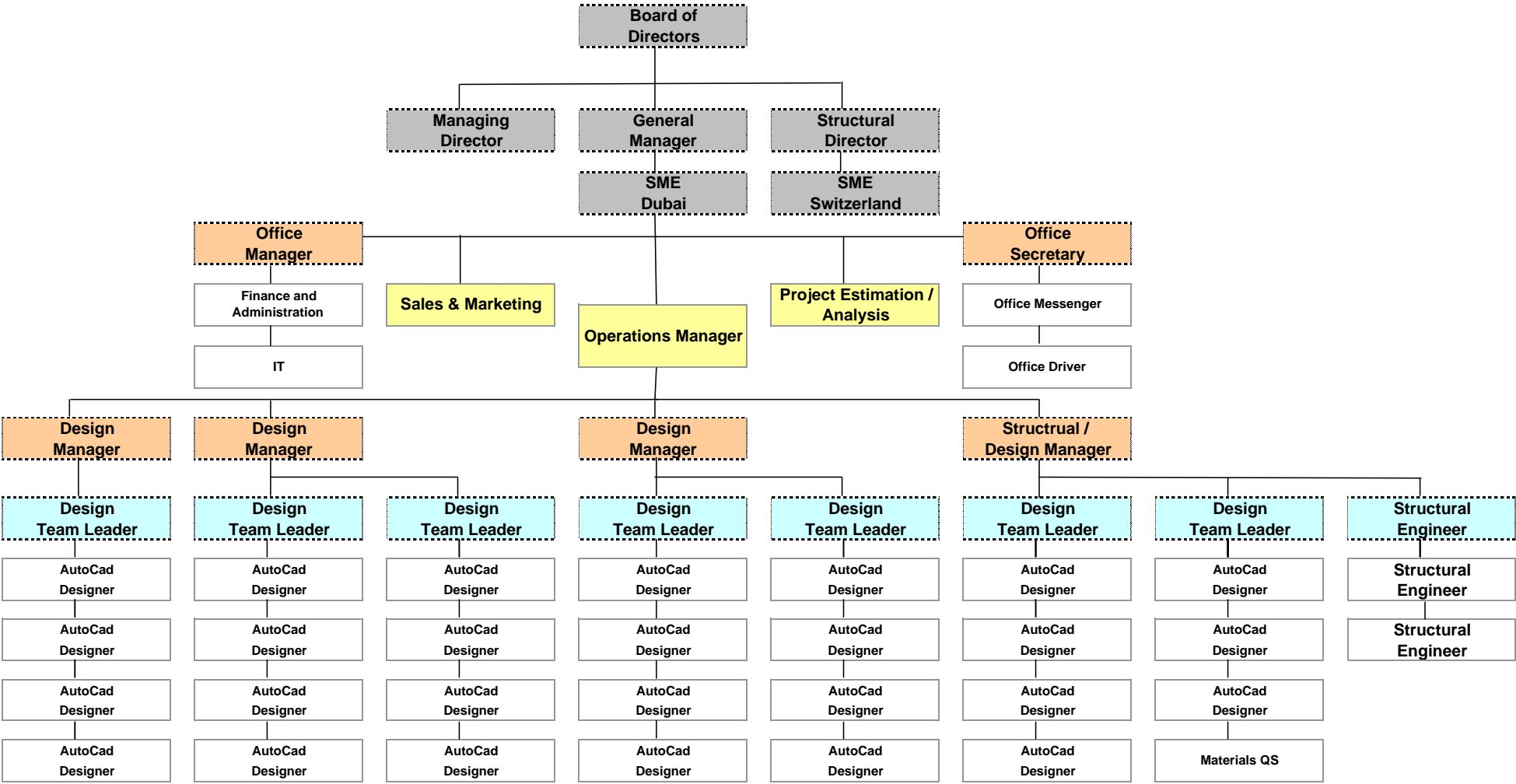


## 2- Company Organization Chart



# SWISS MIDDLE EAST

## ORGANISATION OVERVIEW



### 3- Company Profile



### 3- Company Profile

Swiss Middle East is a specialist “**Design, Engineering & Consulting**” office in the custom Design, Engineering of Buildings Facades including aluminum / steel curtain wall and metal cladding.

- Curtain wall (conventional and structural glazing).
- Skylights.
- Balustrades (floor and wall mounted –free standing).
- Windows and Doors.
- Metal and Glass Canopies.
- Wall, Soffit and Roof cladding.
- Structural glass walls using metal cables, rods and spiders.
- Sunshades and Decorative cladding.
- Architectural Louvers.

SME Design Office provides a full range of design, engineering & consulting services to its clients starting from the project tender drawings till the completion of the work site.

SME Design Office structural service varies from preparing simple structural calculations to a detailed complex structural analysis and finite element study for any element in the curtain wall including glass and cast brackets.

SME Design Office team was involved in many of prestigious projects worldwide covering the Arabian Gulf Region especially in the United Arab Emirates, Kuwait and Kingdom of Saudi Arabia, in addition to Europe, US & Canada.

Some of these projects are classified among the tallest buildings around the world, like:

The Emirates Towers in Dubai (UAE)

The kingdom Center in Riyadh (Saudi Arabia)

Al Faisalia Riyadh, Saudi Arabia

ADIA Abu Dhabi, United Arab Emirates (Double Skin)

## 4- Clients

## 4- Clients

SME serves the following categories of clients

### **Architectural Consultants**

Where we can provide a full building façade package. This includes details and specifications of the curtain wall and architectural cladding.

### **Buildings Owners**

Where we can advise the most suitable and economical aluminum system that can be used.

### **Main Contractors**

Where we can prepare static calculations, monitor the aluminum subcontractor's progress in preparing the shop drawings and review all detail drawings before submitting the consultant.

### **Aluminum Subcontractors**

Where we can provide the shop drawings, Structural calculations and thermal & acoustics analysis, Die drawings, Materials take off calculations and production drawings minimizing time and cost.



## 5- Services

## 5- Services

**SME provides a full design, engineering and consulting service that is related to the aluminum curtain wall and architectural cladding.**

1. Assist the aluminum contractors in studying the **tender drawings** and proposing the proper cladding system that can be used.
2. Prepare the preliminary design drawings and details (**concept drawings**) that illustrate the used aluminum system and show all the critical technical points in that system, ie water drainage, ventilation, pressure equalization, heat expansion, movement joints.
3. Prepare the **shop drawings** and details for each aluminum element in the project that show the interfacing details between this element (curtain wall / skylight / cladding,) and building structure. In addition, to show the relation between the aluminum elements and other architectural finishings.
4. Assist the aluminum contractor in obtaining the client's / **consultant's approval** by attending technical meetings with the consultant's technical engineer.
5. Prepare all the required supporting **structural calculations** and structural analysis, not only for the aluminum profiles but also for any component in the job that might need structural verifications like glass, steel, spiders, etc.
6. Prepare the **materials take off** sheets and releases.
7. Issue the **production documents** including Fabrication detail drawings, 3D drawings and sketches, table of fittings and accessories.
8. Release the **installation drawings** that guide the installation crews to complete the job in the minimum duration, including Brackets general arrangement (layout) Mullions & Transoms layout for curtain wall and skylight glass layout
9. **Third party inspection** reviewing curtain wall shop drawings and structural analysis.

## 6- Company Employees



Curtain Wall & Architectural Cladding

## 6- Company Employees

“Swiss Middle East” Design office staff are highly qualified and professional in the curtain wall and architectural cladding design.

1- Managements	: 2
2- Senior Design Managers	: 4
3- Design Team Leaders	: 6
4- Design Engineer	: 20
5- Cad operators	: 10
6- Structural Engineers	: 5
7- Administration staff	: 5



## 7 - Office Facilities and Equipments

## 7- Office Facilities and Equipments

“Swiss Middle East” has its office in Dubai, with complete line of office equipments and desktop items. Using the most advanced drafting and structural analysis programs.

1- Drafting Work Station	: 44
2- A3 Printers	: 3
3- Color Printers	: 2
4- A1 Size Drawings Plotters	: 1
5- Internal Network	: 1

## 8- SME Drawings Specimens





ZONE 7

ZONE 6

ZONE 5

ZONE 4

ZONE 3

ZONE 2

ZONE 1

▼ TOP OF STEEL(TO BE CONFIRMED)

▼ PROPOSED TOP OF STEEL

▼ PROPOSED TOP OF STEEL

▼ ROOF LEVEL

▼ LEVEL 44

▼ LEVEL 43

▼ LEVEL 42

▼ LEVEL 41

▼ LEVEL 40

▼ LEVEL 39

▼ LEVEL 38

▼ LEVEL 37

▼ LEVEL 36

▼ LEVEL 35

▼ LEVEL 34

▼ LEVEL 33

▼ LEVEL 32

▼ LEVEL 31

▼ LEVEL 30

▼ LEVEL 29

▼ LEVEL 28

▼ LEVEL 27

▼ LEVEL 26

▼ LEVEL 25

▼ LEVEL 24

▼ LEVEL 23

▼ LEVEL 22

▼ LEVEL 21

▼ LEVEL 20

▼ LEVEL 19

▼ LEVEL 18

▼ LEVEL 17

▼ LEVEL 16

▼ LEVEL 15

▼ LEVEL 14

▼ LEVEL 13

▼ LEVEL 12

▼ LEVEL 11

▼ LEVEL 10

▼ LEVEL 9

▼ LEVEL 8

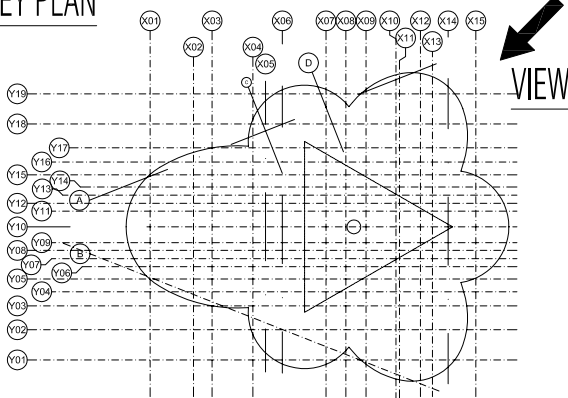
▼ LEVEL 7

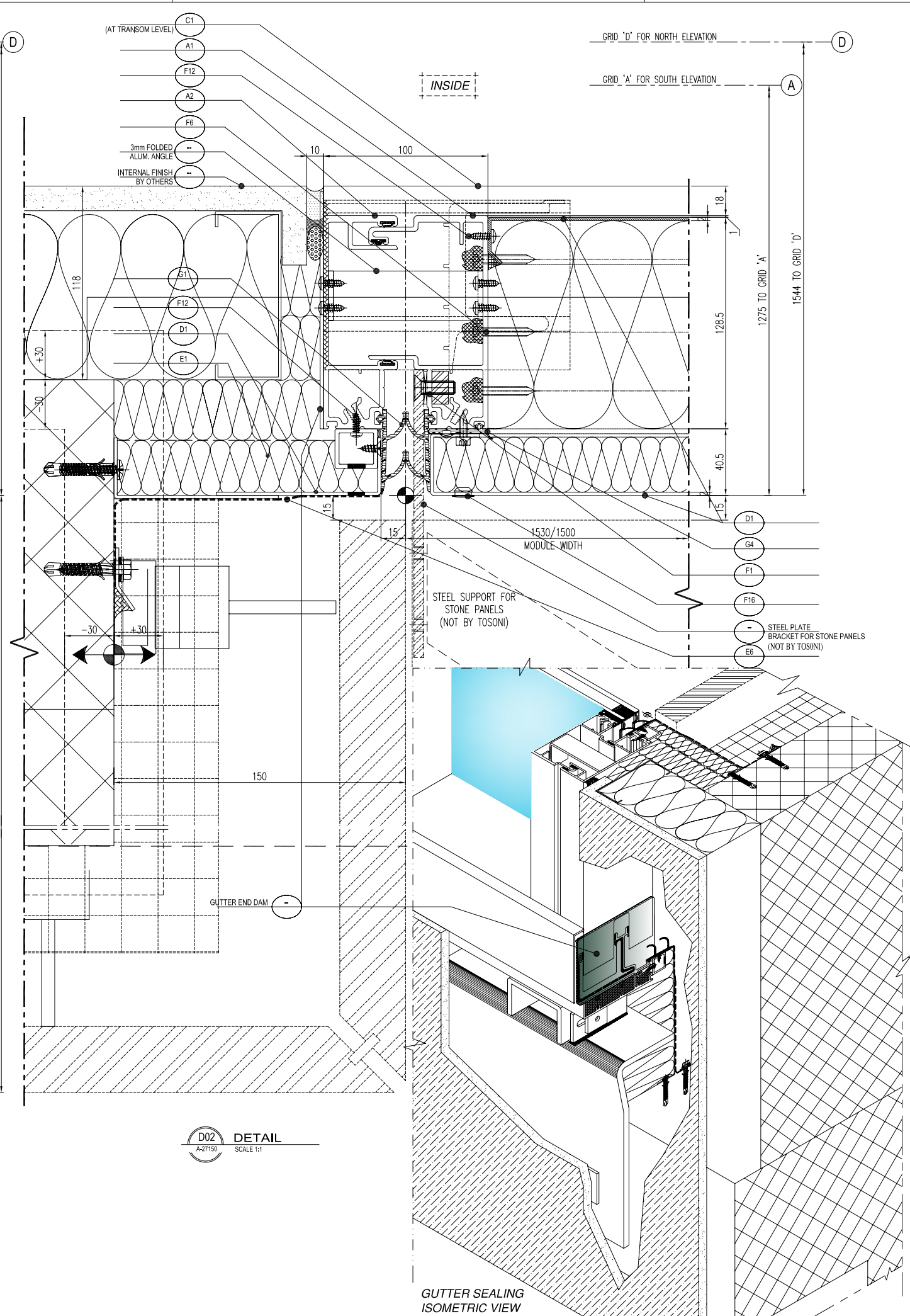
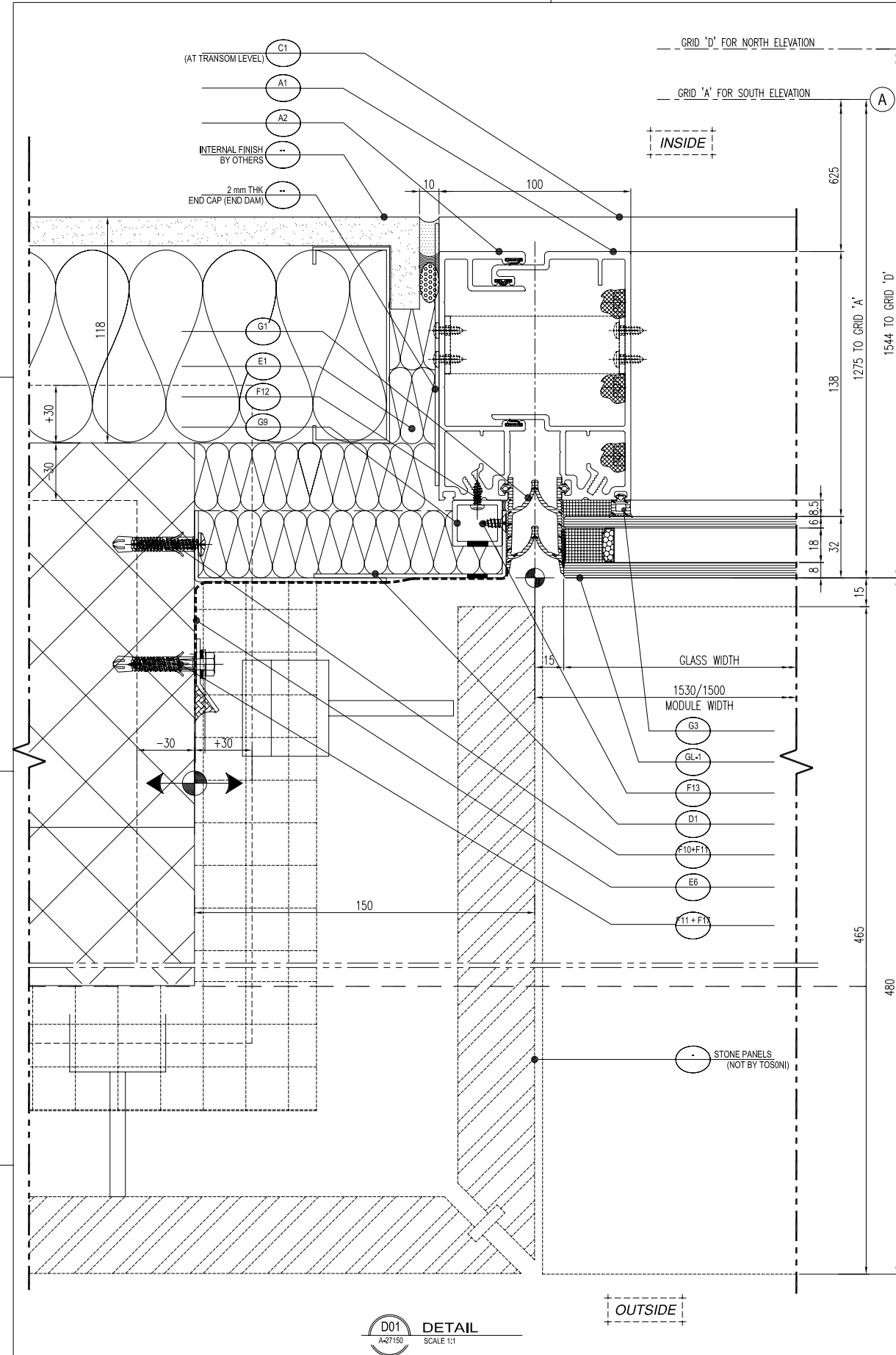
▼ LEVEL 6

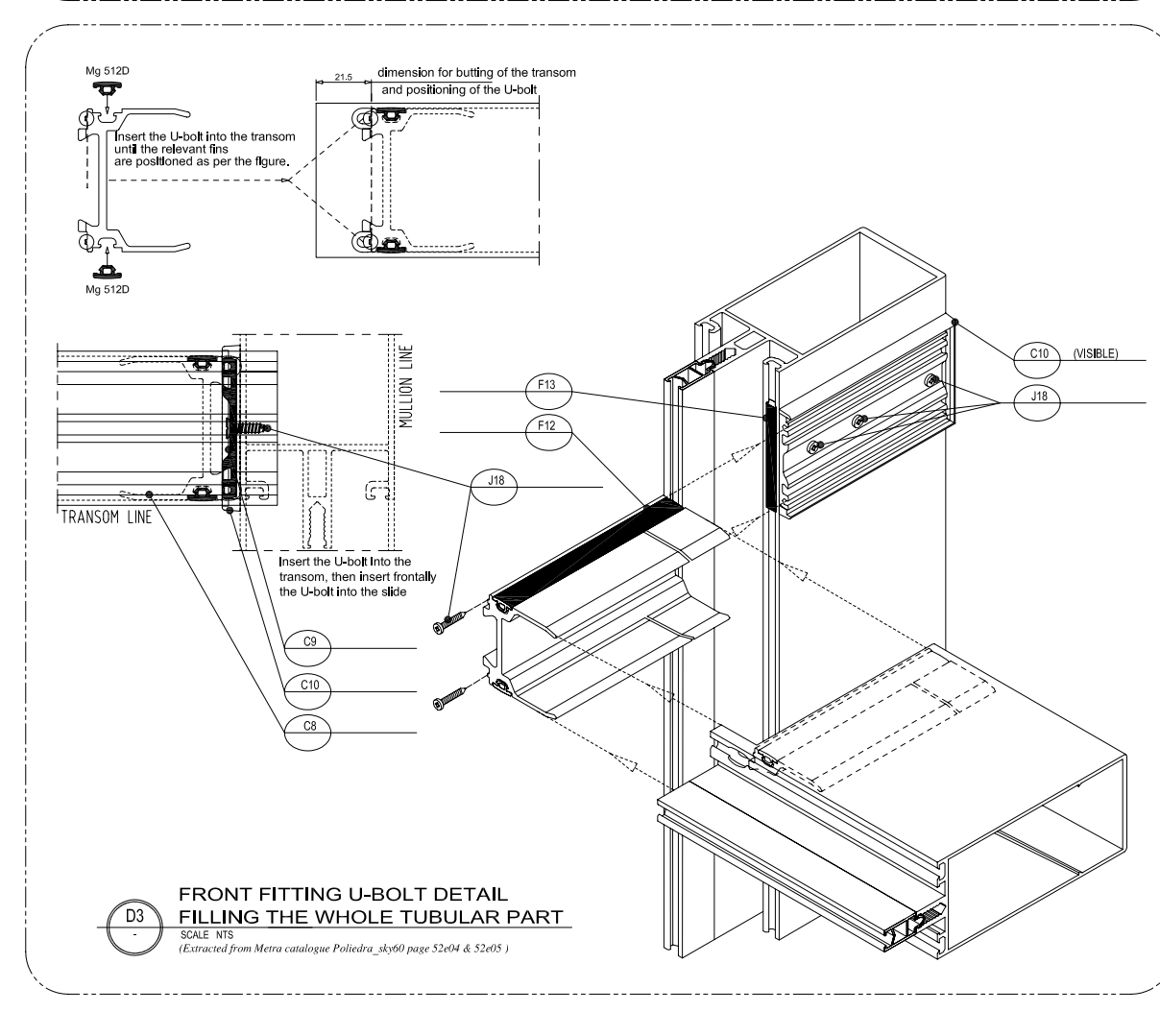
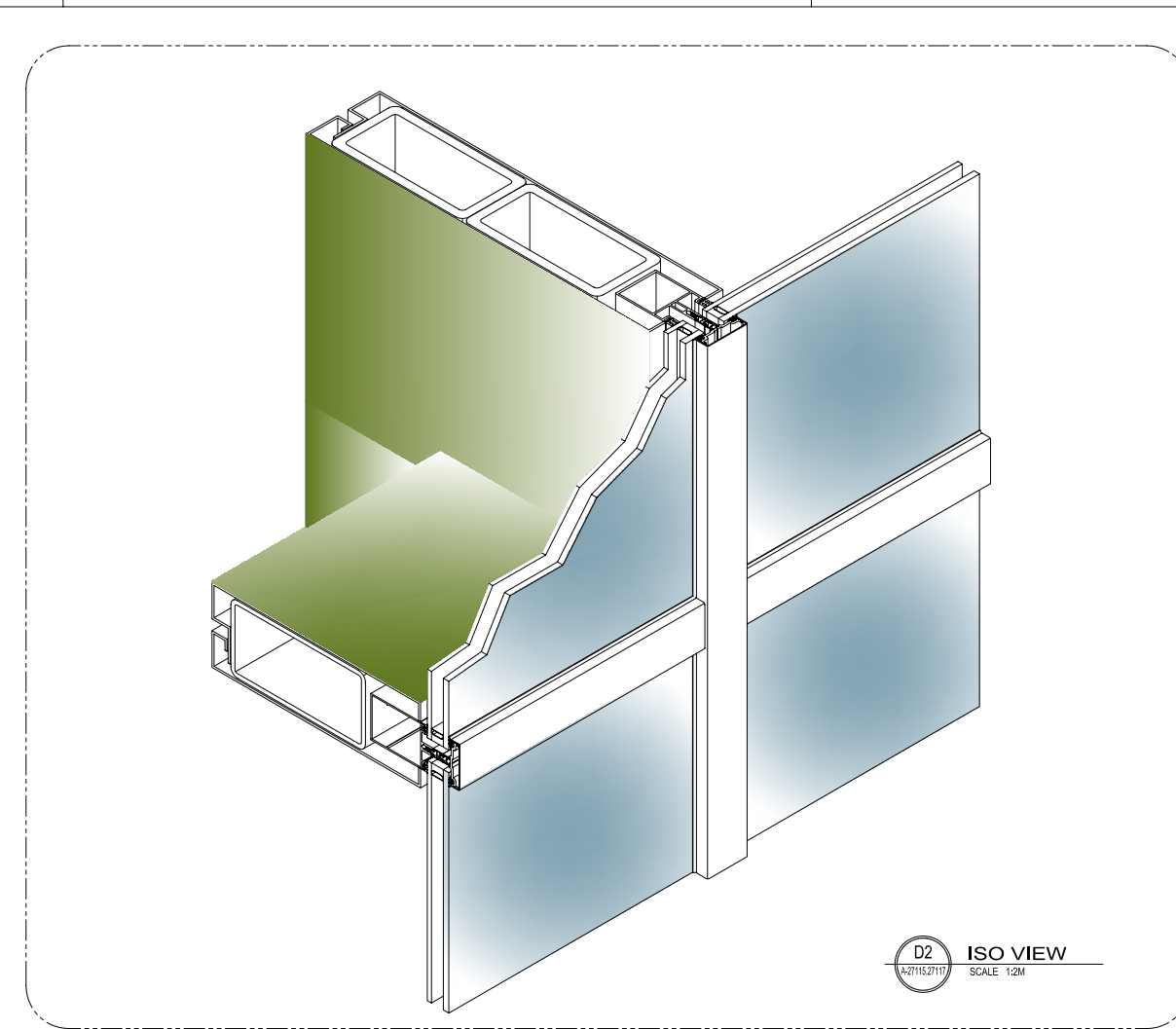
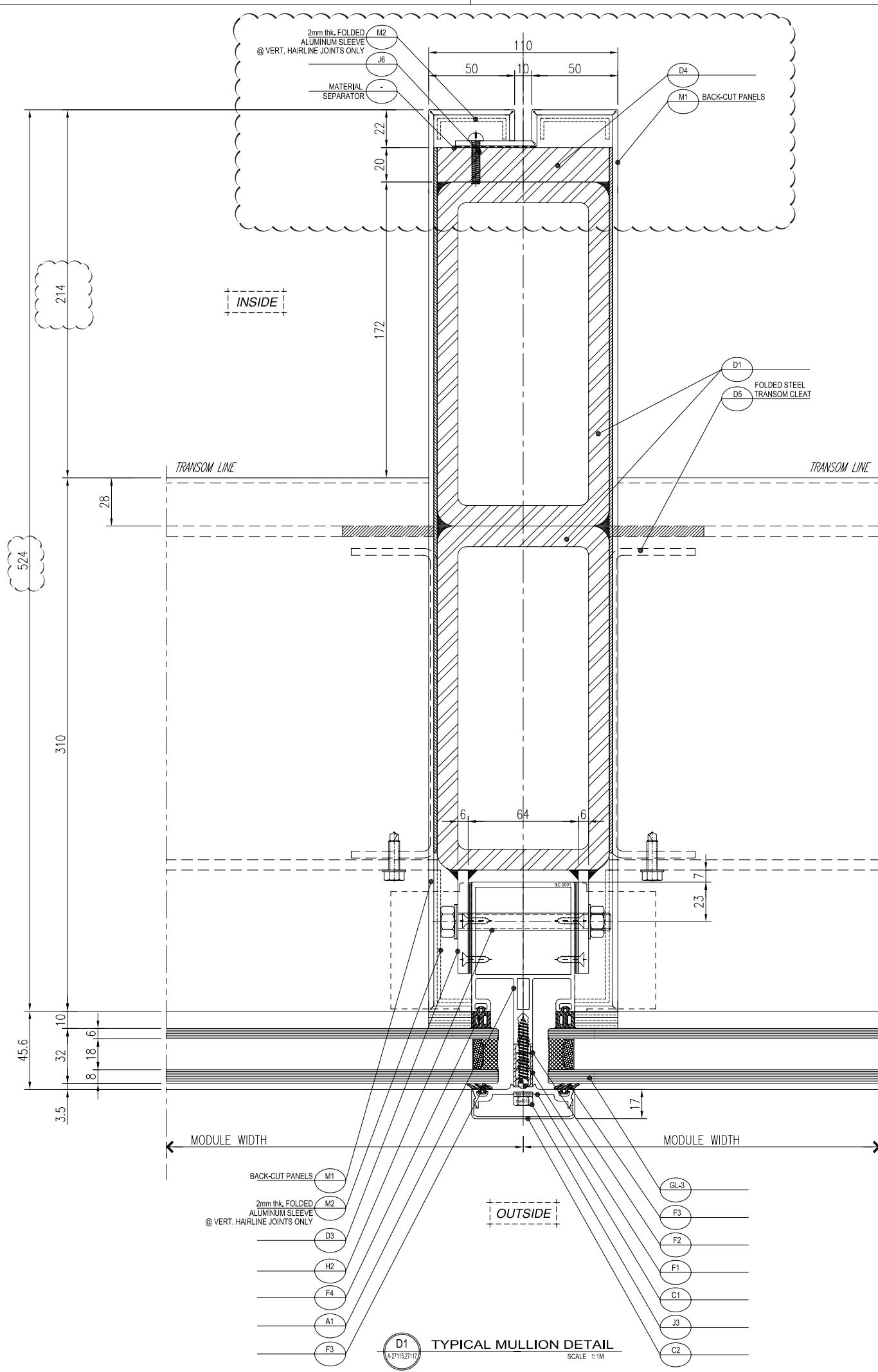
▼ LEVEL 5

ISOMETRIC VIEW 3

KEY PLAN

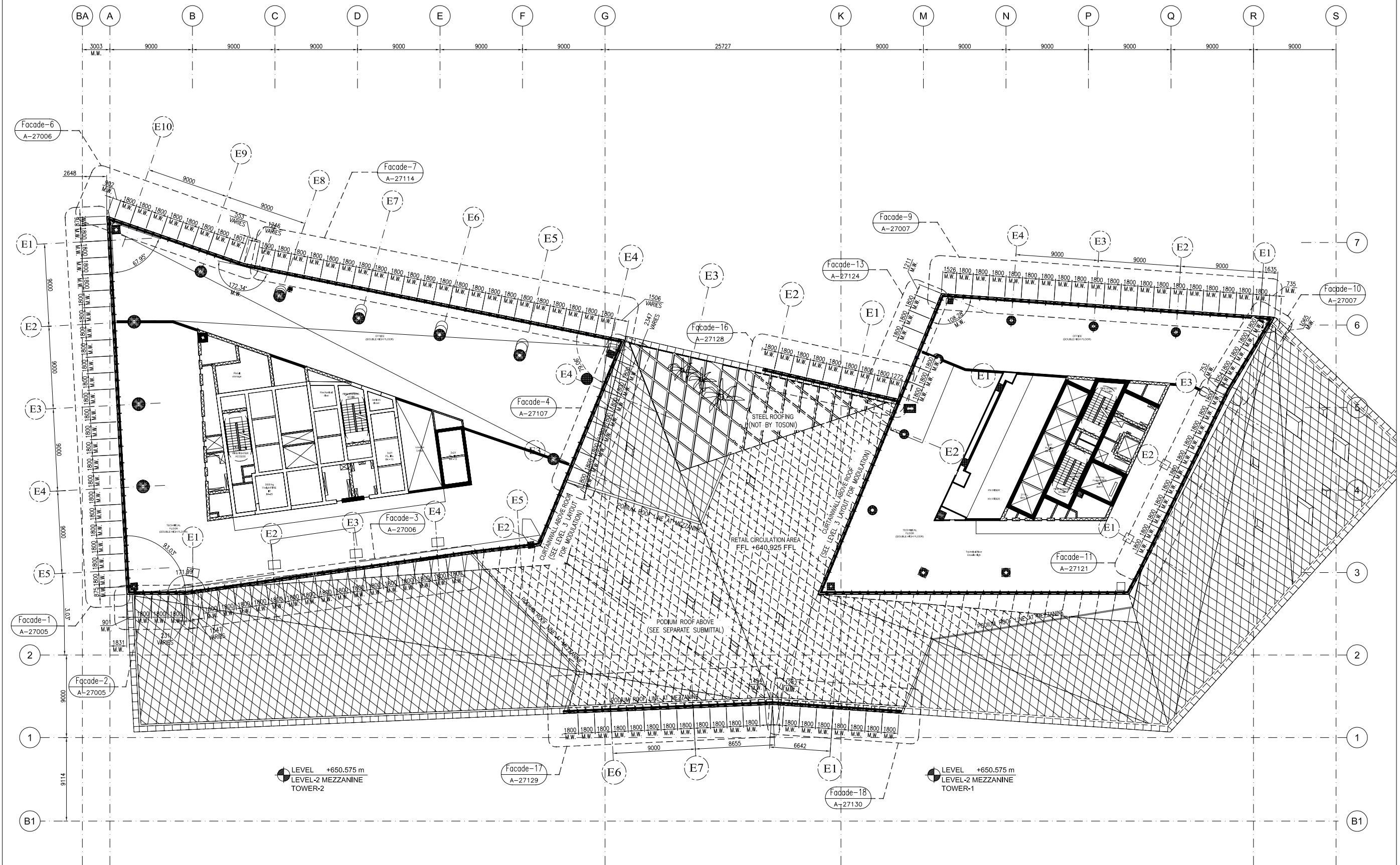






GENERAL NOTES :





TOTAL HEIGHT 772.525m



ROOF TOP FRL 764.325m



LEVEL 25 FFL 755.725m



LEVEL 24 FFL 747.325m



LEVEL 23 FFL 743.125m



LEVEL 22 FFL 738.925m



LEVEL 21 FFL 734.725m



LEVEL 20 FFL 730.525m



LEVEL 19 FFL 726.325m



LEVEL 18 FFL 722.125m



LEVEL 17 FFL 717.925m



LEVEL 16 FFL 713.725m



LEVEL 15 FFL 709.525m



LEVEL 14 FFL 705.325m



LEVEL 13 FFL 696.925m



LEVEL 12 FFL 692.725m



LEVEL 11 FFL 688.525m



LEVEL 10 FFL 684.325m



LEVEL 9 FFL 680.125m



LEVEL 8 FFL 675.925m



LEVEL 7 FFL 671.725m



LEVEL 6 FFL 667.525m



LEVEL 5 FFL 663.325m



LEVEL 4 FFL 659.125m



LEVEL 3 FFL 654.925m



LEVEL 2 FFL 646.525m



LEVEL 1 FFL 640.925m



GF FFL 634.525m



TOWER - 2

TOWER - 1

TOTAL HEIGHT 732.425m



ROOF TOP FRL 726.525m



LEVEL 17 FFL 717.925m



LEVEL 16 FFL 709.525m



LEVEL 15 FFL 705.325m



LEVEL 14 FFL 701.125m



LEVEL 13 FFL 696.925m



LEVEL 12 FFL 692.725m



LEVEL 11 FFL 688.525m



LEVEL 10 FFL 684.325m



LEVEL 9 FFL 680.125m



LEVEL 8 FFL 675.925m



LEVEL 7 FFL 671.725m



LEVEL 6 FFL 667.525m



LEVEL 5 FFL 663.325m



LEVEL 4 FFL 659.125m



LEVEL 3 FFL 654.925m



LEVEL 2 FFL 646.525m



LEVEL 1 FFL 640.925m



GF FFL 634.525m



BASEMENT 1 FFL 628.525m



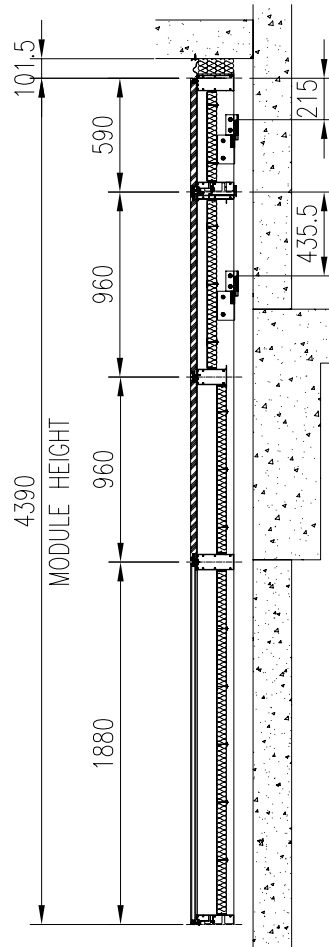
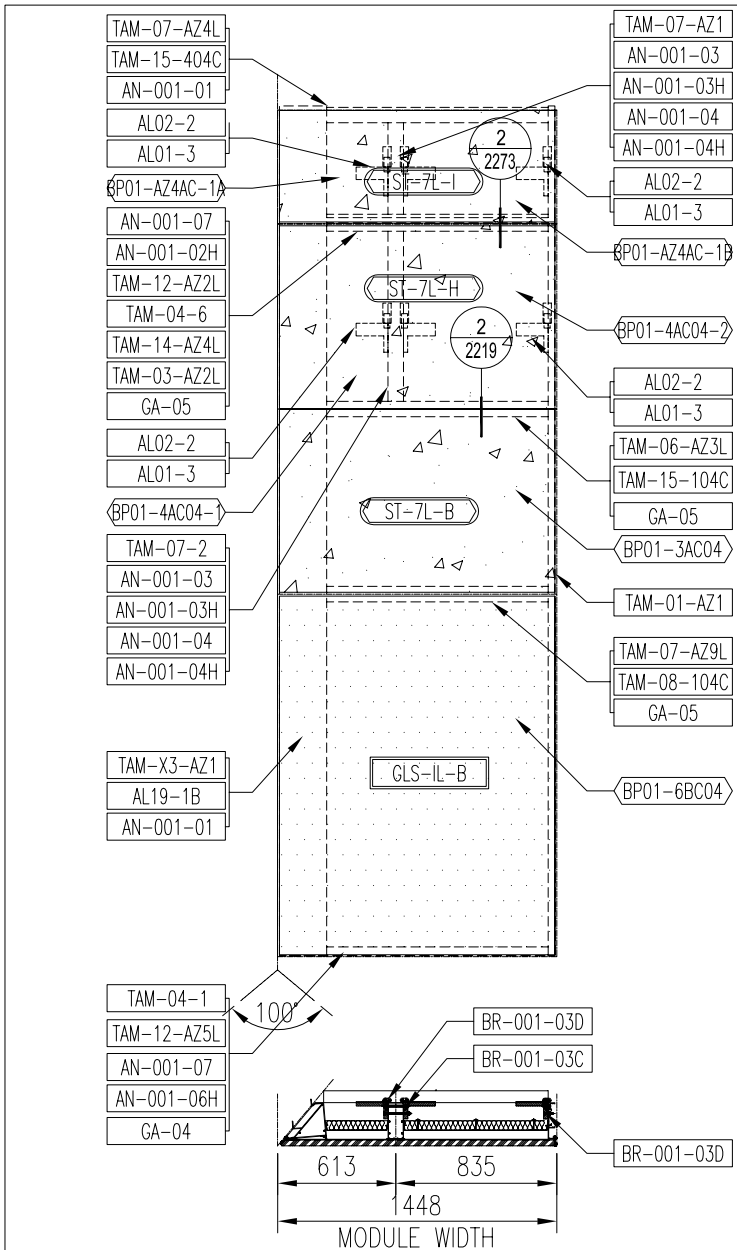
A1

A-27001

ELEVATION TOWARDS NORTH

SCALE 1:200



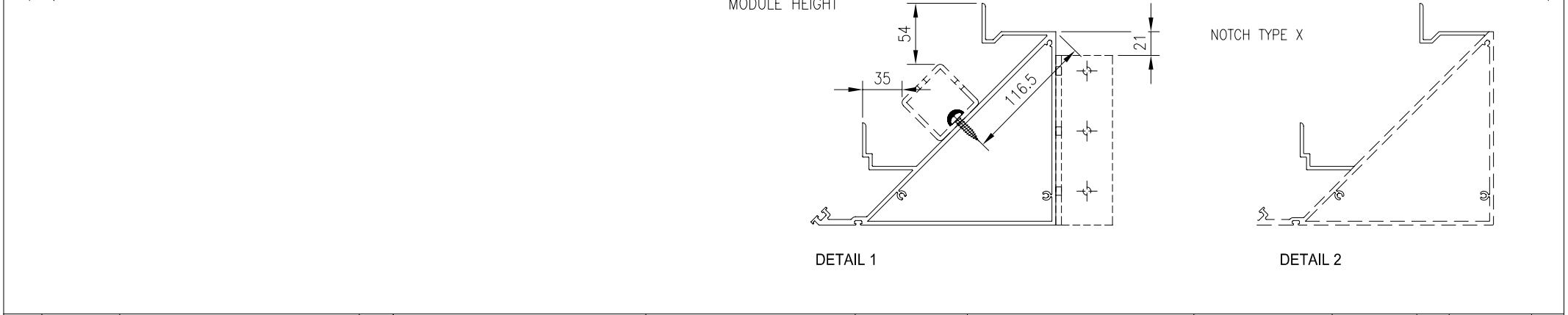
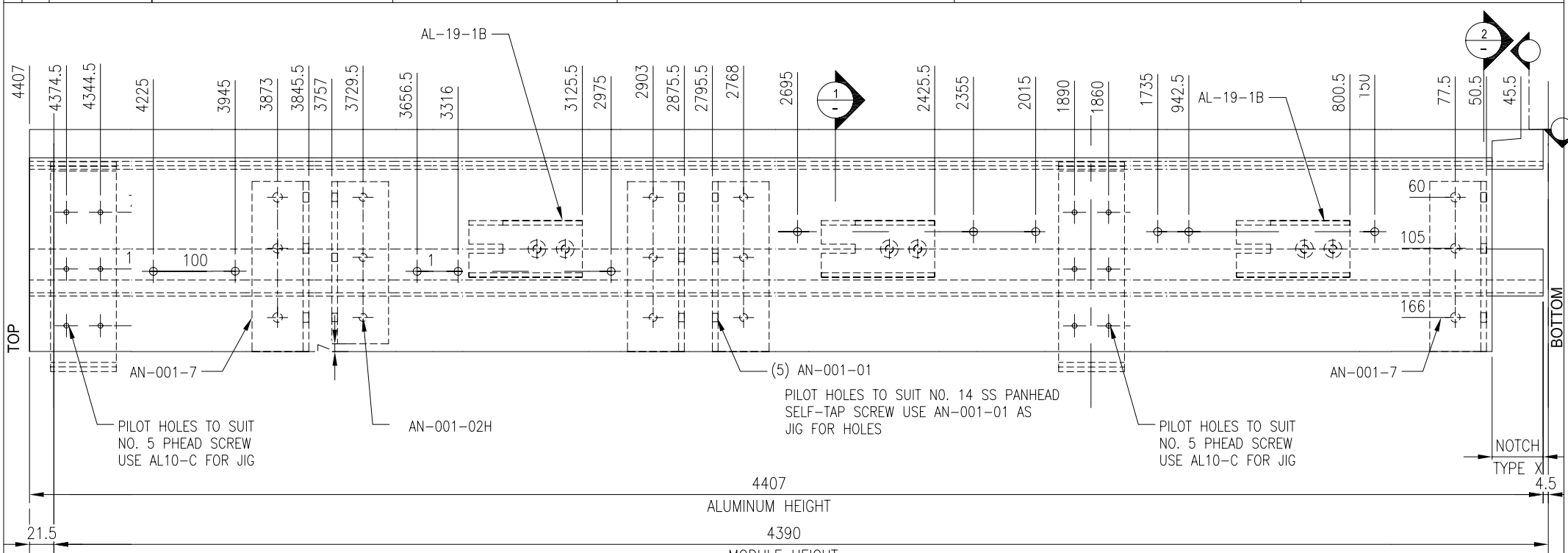


NOTE:  
DO NOT FABRICATE UNLESS SHOP  
DWGS FOR THIS SYSTEM HAVE  
BEEN REVIEWED AND APPROVED.

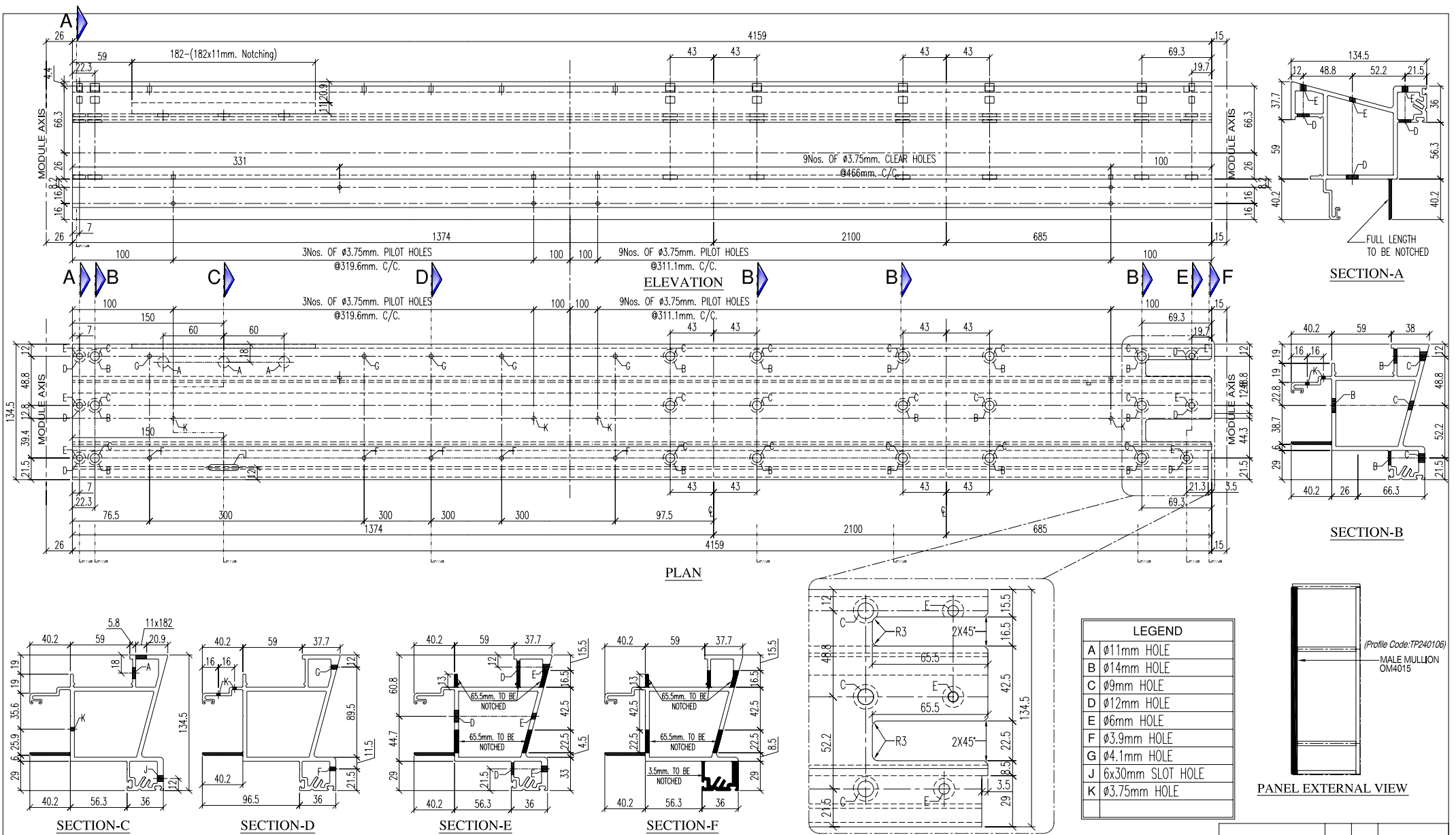
CUTTING LIST						
	ITEM NO.	PART NO.	DESCRIPTION	QTY/UNIT	LENGTH	HEIGHT
ALUMINUM		TAM-01-AZ1	FEMALE MULLION	1	4407	
		TAM-03-AZ2L	GUTTER	1	1166.5	
		TAM-04-1	GLASS LEDGE	2	80	
		TAM-04-6	BOTTOM KERF CLIP	4	80	
		TAM-06-AZ3L	INTERMEDIATE TRANSOM	1	1162	
		TAM-07-2	BOX MULLION	1	882	
		TAM-07-AZ1	BOX MULLION	1	474.5	
		TAM-07-AZ4L	HEAD TRANSOM	1	1165	
		TAM-07-AZ9L	INTERMEDIATE TRANSOM	1	1165	
		TAM-08-204C	BOTTOM KERF CLIP	1	1372	
		TAM-12-AZ2L	SILL	1	1158	
		TAM-12-AZ5L	SILL	1	1367	
		TAM-14-AZ4L	TOP KERF CLIP	1	1350	
		TAM-15-104C	DOUBLE KERF CLIP	1	1348	
		TAM-15-404C	DOUBLE KERF CLIP	1	1372	
ALUM. ACCES.		TAM-X3-AZ1	MALE CORNER MULLION	1	4407	
	AL01-3	ELT-51	HOOK BRACKET	6	75	
	AL02-2	ELT-52	SUPPORT HOOK BRACKET	6	105	
	AL19-1B		ALUMINUM TUBE	3	100	
	AN-001-02H		ANGLE BRACKET	1	150	
	AN-001-01		ANGLE BRACKET	3	150	
	AN-001-07		ANGLE BRACKET	2	143	
	AN-001-06H		ANGLE BRACKET	2	183	
	AL10-C		TRANSOM CONNECTOR	1	58	
	AN-001-04		ANGLE BRACKET	2	140	
	AN-001-04H		ANGLE BRACKET	2	140	
	AN-001-03		ANGLE BRACKET	2	140	
	AN-001-03H		ANGLE BRACKET	2	140	
	BR-001-03C		STEEL BRACKET	2	150	
	BR-001-03D		STEEL BRACKET	4	150	
BACKPAN	BP01-AZ4AC-1A		1.2mm G.I. SHEET BACKPAN	1	412	564.5
	BP01-AY4AC-1B		1.2mm G.I. SHEET BACKPAN	1	840	564.5
	BP01-4AC04-1		1.2mm G.I. SHEET BACKPAN	1	412	970
	BP01-4AC04-2		1.2mm G.I. SHEET BACKPAN	1	840	970
	BP01-3AC04		1.2mm G.I. SHEET BACKPAN	1	1242	970
	BP01-6BC04		1.2mm G.I. SHEET BACKPAN	1	1242	1880
STONE & GLASS	ST-7L-I		STONE CLADDING	1	1418	578.5
	ST-7L-H		STONE CLADDING	1	1418	948.5
	ST-7L-B		STONE CLADDING	1	1418	948.5
	GLS-IL-B		SPANDREL GLASS	1	1418	1860
FASTENERS			#12x38 Pan Head Self Tapping Screw	34		
			#12x16 Pan Head Self Tapping Screw	21		
			#10x16 CSK Self-Tapping Screw	14		
			#10x20 Self Drilling Screw	18		
			M10 CSK SS Bolt with Nut & Washer	4		
			M10 SS Through Bolt w/ Nut & Washer	4		
GASKETS			M10x80 SS Hex Head Bolt w/ Nut & Washer	4		
	GA-02		SILL TRANSOM GASKET	mtrs	3	
	GA-03		GUTTER TRANSOM GASKET	mtrs	1.5	
	GA-04		2X15X100 MM SETTING BLOCK	2		
	GA-05		5X12X100 MM SETTING BLOCK	6		
	GU-05		MULLION GASKET	mtrs	10.5	
	GU-17		RAIN SCREEN GASKET FOR GUTTER	mtrs	1.5	
	GU-19		MULLION GASKET	mtrs	15.5	
	GU-21		RAIN SCREEN GASKET FOR GUTTER	mtrs	7.5	
			50MM THK. ROCKWOOL INSULATION		147.414	m2
MISCELLANEOUS			STRUCTURAL SEALANT		0.048	m3
			WEATHER SILICONE SEALANT		0.0165	m3
			BACKER ROD		264.12	m

				1ST ANGLE PROJECTION		Cut Ends : W / CENTRE / MACH / SUBA /		Date : 09 May 2011	Post Paint	Part
				3RD ANGLE PROJECTION		Material : see fabrication drawing		Scale : N.T.S.	Pre Paint	Sub Assem.
				Standard XX. = $\pm 1$ Tolerances XXX. = $\pm 0.5$		Project : <b>TAMKEEN TOWER</b>		Finish :		Drawn : TATV
				Angle $\pm 1$ Squareness $\pm 1$		Project No: <b>P-047</b>		Drawing No. :		Sheet : Rev. :
0	2 JUN 2011	ISSUED FOR PRODUCTION				Drawing Title : <b>UNIT FRAME ASSEMBLY</b>		Drawing No. : <b>UCW-003-06-01-OL</b>		<b>0</b>
Rev.	Date	Amendment								

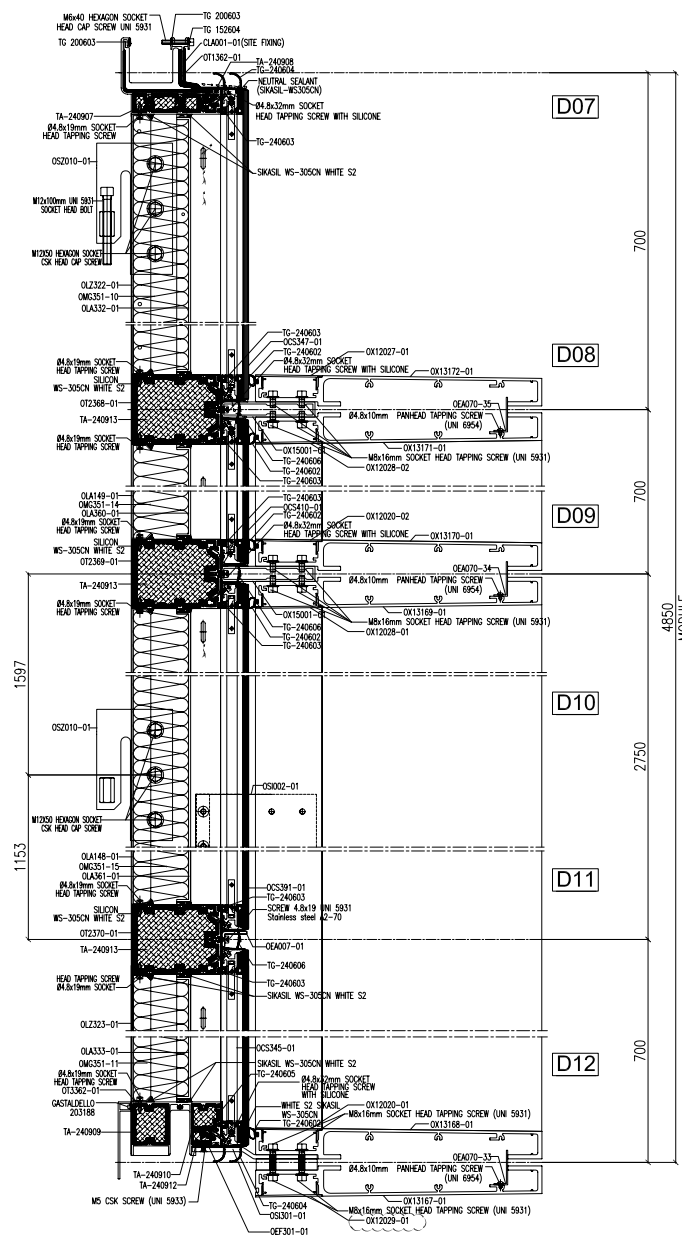
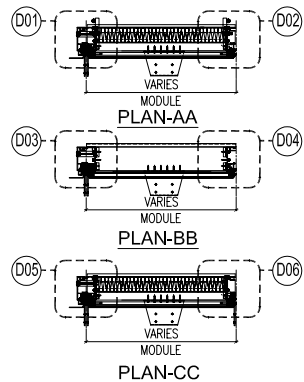
Rev.	CHECKED	PART NUMBER	DIM 'A'	DIM 'B'	DIM 'C'	REMARKS
0	-	TAM-X3-AZ1				-



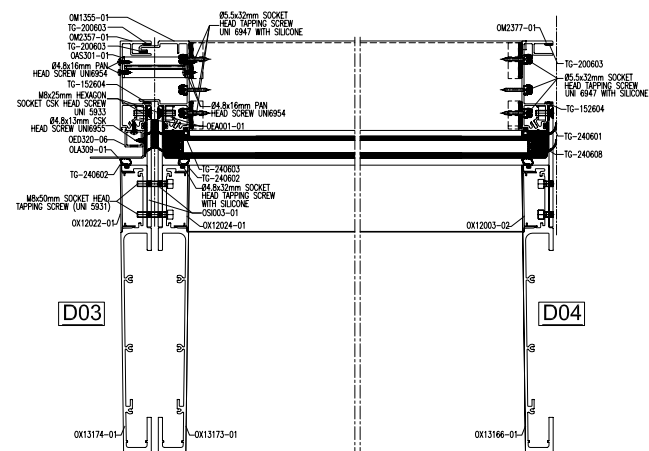
			X	1ST ANGLE PROJECTION	Cut Ends : W / CENTRE / MACH / SUBA / Material : 6063-T6 ALLOY	Date : 01 Jun 2011	Post Paint	Part	X
				3RD ANGLE PROJECTION		Scale : N.T.S.	Pre Paint		
				Standard XX. = $\pm 1$ Tolerances XXX. = $\pm 0.5$	Project : <b>TAMKEEN TOWER</b>	Finish : <i>AS PER APPROVAL</i>	Drawn : TATV	Checked : ANTHONY	
0	01 Jun 2011	ISSUED FOR PRODUCTION		Angle $\pm 1$ Squareness $\pm 1$	Project No: <b>P-047</b>	Drawing Title : <b>MALE CORNER MULLION</b>	Drawing No. : <b>TAM-X3-AZ1</b>	Sheet :	Rev. : <b>0</b>
Rev.	Date	Amendment							







CODE	DESCRIPTION	QTY/UNIT	L	H
OM1355-01	MALE MULLION	1	4816.4mm	-
OM2342-01	FEMALE MULLION	1	4809mm	-
OM2357-01	FEMALE MULLION	1	4813.3mm	-
OT1362-01	TOP TRANSOM	1	593.5mm	-
OT2368-01	MIDDLE TRANSOM	1	419mm	-
OT2369-01	MIDDLE TRANSOM	1	389.5mm	-
OT2370-01	MIDDLE TRANSOM	1	273.5mm	-
OT2362-01	BOTTOM TRANSOM	1	246mm	-
OAS308-01	GUTTER SLEEVE ASSEMBLY	1	-	-
OSCS345-01	SINGLE GLAZING FRAME ASSEMBLY	1	-	-
OSCS347-01	SINGLE GLAZING FRAME ASSEMBLY	1	-	-
OSCS391-01	SINGLE GLAZING FRAME ASSEMBLY	1	-	-
OSCS410-01	SINGLE GLAZING FRAME ASSEMBLY	1	-	-
OLA332-01	3mm Thk.ALUM.BACKPAN SHEET	1	-	-
OLA333-01	3mm Thk.ALUM.BACKPAN SHEET	1	-	-
OLA360-01	3mm Thk.ALUM.BACKPAN SHEET	1	-	-
OLA361-01	3mm Thk.ALUM.BACKPAN SHEET	1	-	-
OLZ322-01	2mm Thk. G.I BACKPAN SHEET	1	-	-
OLZ323-01	2mm Thk. G.I BACKPAN SHEET	1	-	-
OLA149-01	2mm Thk. ALUMINIUM SHEET	1	-	-
OLA148-01	2mm Thk. ALUMINIUM SHEET	1	-	-
OS2009-01	HOOKING BRACKET	2	190mm	-
OS2010-01	HOOKING BRACKET	2	190mm	-
OEAO01-01	20x10mm ALUMINIUM FLAT BAR	20	200mm	-
OSIO02-01	6mm Thk. SS PLATE	6	175mm	200mm
OX15001-01	GLAZING & SUNBREAKER SUPPORT	2	220mm	-
OEFS01-01	5mm thk. SS FLATBAR	1	150mm	-
OSIO1-01	6mm Thk. SS BRACKET	1	150mm	-
OEAO07-01	40x40x4mm ALUM.ANGLE	1	100mm	-
OLA006-01	4MM THK. ALUM.END PLATE	7	311mm	-
OLA001-01	0.6mm Thk. ALUMINIUM SHEET	1	120mm	-
QAS301-01	3MM THK. ALUM. BENT ANGLE ASSY.	5	-	-
OLA309-01	3MM THK. ALUM. FLASHING	1	1607.5mm	-
OLA304-01	3MM THK. ALUM. FLASHING	1	3250mm	-
QED320-06	THERMAL BRIDGE PROFILE	1	1564.4mm	-
QED320-07	THERMAL BRIDGE PROFILE	1	3250mm	-
OMG351-10	80MM THK. ROCKWOOL INSULATION	1	-	-
OMG351-11	80MM THK. ROCKWOOL INSULATION	1	-	-
OMG351-14	80MM THK. ROCKWOOL INSULATION	1	-	-
OMG351-15	80MM THK. ROCKWOOL INSULATION	1	-	-
TC240601	MULLION GASKET	14.6M	-	-
TC240602	SUN BREAKER PROFILE GASKET	17M	-	-
TC240603	MONOLITHIC GLASS FRAME GASKET	4.7M	-	-
TC240604	GUTTER TRANSOM EXT.GASKET	1.6M	-	-
TC240604	SILL TRANSOM EXT. GASKET	1.6M	-	-
TC240605	MONOLITHIC GLASS FRAME GASKET	1.4M	-	-
TC240606	INTERMEDIATE TRANSOM EXT.GASKET	1.4M	-	-
TC240607	INTERNAL SUPPORT GLASS GASKET	1.63M	-	-
TC240608	INTERNAL SUPPORT GLASS GASKET	2.1M	-	-
TG152604	CONTRAST GASKET	1M	-	-
TC200603	SEAL GASKET	1.5M	-	-
TA-240907	STOPPER TRANSOM TP240153	2 NOS	-	-
TA-240908	STOPPER TRANSOM TP240153	2 NOS	-	-
TA-240909	STOPPER TRANSOM TP240151	2 NOS	-	-
TA-240910	STOPPER TRANSOM TP240151	2 NOS	-	-
TA-240912	STOPPER TRANSOM TP240151	2 NOS	-	-
TA-240913	STOPPER TRANSOM TP240152	6 NOS	-	-
	Ø4.8x32mm SOCKET HEAD TAPPING SCREW	40 NOS	-	-
	Ø5.5x32mm SOCKET HEAD TAPPING SCREW (UNI 6947)	46 NOS	-	-
	M8x25mm HEXAGON SOCKET CSK HEAD SCREW (UNI 5933)	20 NOS	-	-
6/MOTS1E12AX05042	HEXAGON SOCKET CONTRIBUTOR HEAD CAP SCREW M12x50 - UNI 5933 - STAINLESS STEEL A2-70	6 NOS	-	-
6/DA12UNI558842	HEXAGON NUT M12 - UNI 5588 - STAINLESS STEEL A2-70	6 NOS	-	-
6/DA12UNI71512	SPRING LOCK WASHER Ø13x21 - UNI 7151 - STAINLESS STEEL A2-70	6 NOS	-	-
	M6x40 HEXAGON SOCKET HEAD CAP SCREW (UNI 5931)	1 No	-	-
	Ø4.8x16mm SOCKET HEAD TAPPING SCREW	10 NOS	-	-
	Ø4.8x19mm SOCKET HEAD TAPPING SCREW	4 NOS	-	-
	M5 CSK SCREW (UNI 5933)	10 NOS	-	-
	M8x16mm SOCKET HEAD TAPPING SCREW(UNI 5931)	4 NOS	-	-
	M8x12mm SOCKET HEAD TAPPING SCREW(UNI 5931)	20 NOS	-	-
2031188	GASTALDELLO	2 NOS	-	-
6/MOTS1E12XU10042	M12x100mm UNI 5931 SOCKET HEAD BOLT	1 No	-	-
	M8x50mm SOCKET HEAD TAPPING SCREW (UNI 5931)	5 NOS	-	-
6/AX0TSP4.8X13.0A2	Ø4.8x13mm CSK HEAD SCREW (UNI6955)	16 NOS	-	-



61AX00TC4.8X10.0A2	Ø4.8x10mm PANHEAD TAPPING SCREW (UNI 6954)	9 Nos	-	-
61AX0TSP4.8X19.0A2	Ø4.8x19mm COUNTERSUNK HEAD SCREW (UNI 6955)	9 Nos	-	-
	Ø4.8x50mm PANHEAD TAPPING SCREW (UNI 6954)	36 Nos	-	-
OSI003-01	6mm Thk. SS PLATE	14	175mm	200mm

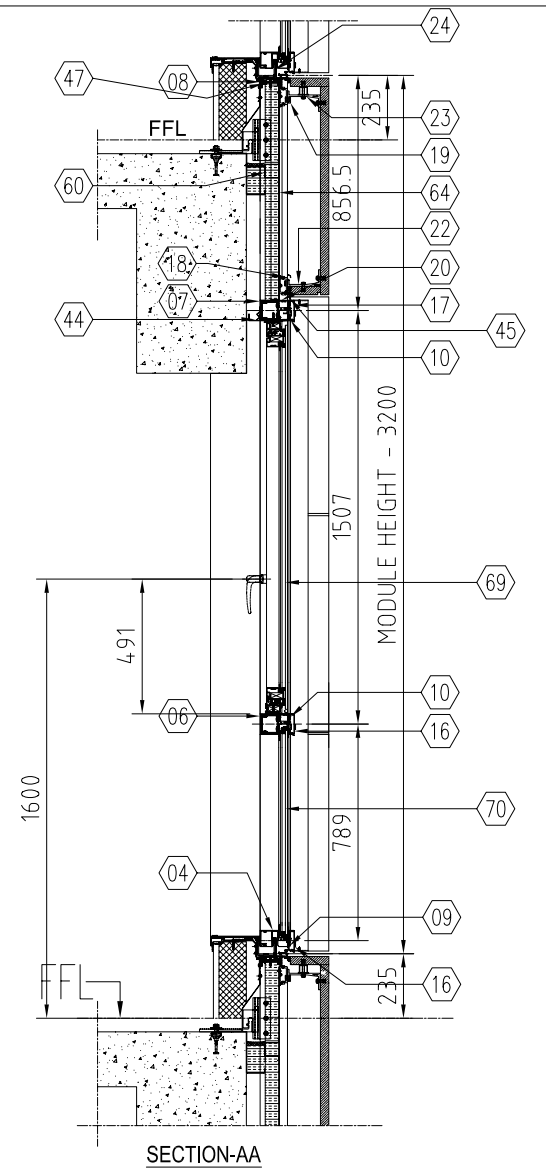
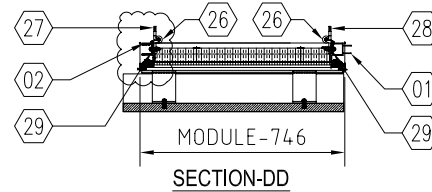
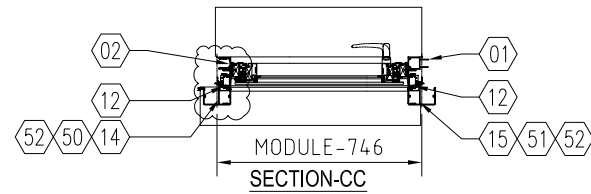
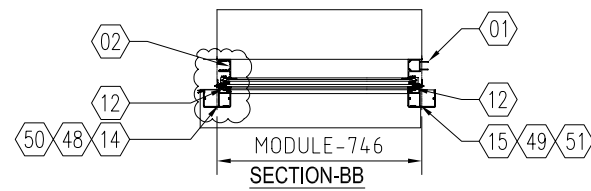
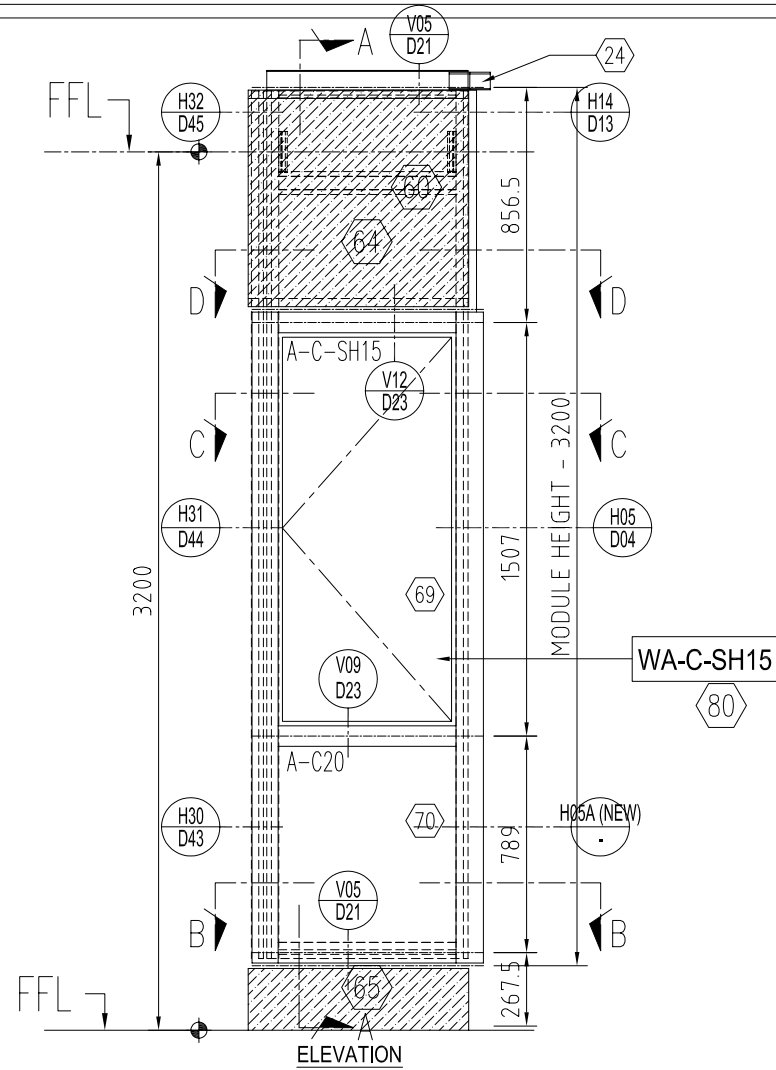




ITEM	PART NUMBER	DESCRIPTION	QT'Y/UNIT	DIM A.	DIM B.
01	23502-02-01	MALE MULLION	1	3161	
02	13556-02-06	FEMALE MULLION	1	3161	
03	-	-	-	-	
04	13557-06-01	SILL TRANSOM	1	700	
05	-	-	-	-	
06	23504-07-02	MID TRANSOM (INTERMEDIATE)	1	700	
07	23504-07-03	MID TRANSOM (BELOW HEAD TRANSOM)	1	700	
08	23542-10-01N	HEAD TRANSOM	1	734	
09	13578-03-01	SILL TRANSOM PRESSURE PLATE	1	734	
10	13559-07-01	MID TRANSOM PRESSURE PLATE	2	645	
11					
12	13560-02-01	PRESSURE PLATES @ MALE & (FEMALE) MULLION	2	2353	
13	-	PRESSURE PLATES @ FEMALE MULLION	-	-	
14	23505-01-01	MULLION COVER CAP @ FEMALE MULLION	1	2367	
15	23505-01-01(H)	MULLION COVER CAP @ MALE MULLION	1	2367	
16	13558-07-01	SILL & MID TRANSOM COVER CAPS	3	645	
17					
18	23509-07-01	STONE CARRYING TRANSOMS	1	700	
19	23509-07-02	STONE CARRYING TRANSOMS	1	700	
20	13562-07-01	TRANSOM ADAPTOR	1	700	
21	-	-	-	-	
22	13571-01-01	STONE CLADDING BRACKET	2	85	
23	13571-01-05	STONE CLADDING BRACKET	2	85	
24	13570-01-01	SPLICER	1	150	
25					
26	12937-01-01	HOOKING BRACKET ATTACHMENT	2	150	
27	AK 01018-01-01	HOOKING BRACKET (12935)	1	80	
28	AK 01018-01-02	HOOKING BRACKET (12935)	1	80	
29	AK 11056-01-01	BEARING PLATE	2	150	
30					
31					
32					
33					
34					
35					
36					
37					
38					
39					
40					
41					
42					
43					
44	ACLIP-01-01	1.5MM.THK.x60MM LG. ALUM. CLIP	3	60	
45	AANG1-07-01	20x20x1.5MM. ALUM. ANGLE	1	800	
46	-	-	-	-	
47	AANG3-05-01	26x26x1.5MM. ALUM. FORMED ANGLE	1	645	
48	-	-	-	-	
49	-	-	-	-	
50	SST-MCC-01-01	1MM. THK. STAINLESS STEEL COVER CAP FOR MULLION	1	2371	
51	SST-MCC-01-02	1MM. THK. STAINLESS STEEL COVER CAP FOR MULLION	1	2371	
52	SS-ENDM-01-01	2MM. THK. STAINLESS STEEL ENDUM	4	2	
53	ABOX1-01-01	30x30x2MM.THK. ALUM. BOX	2	85	

\* RELEASED ITEM

QTY: 2Nos.



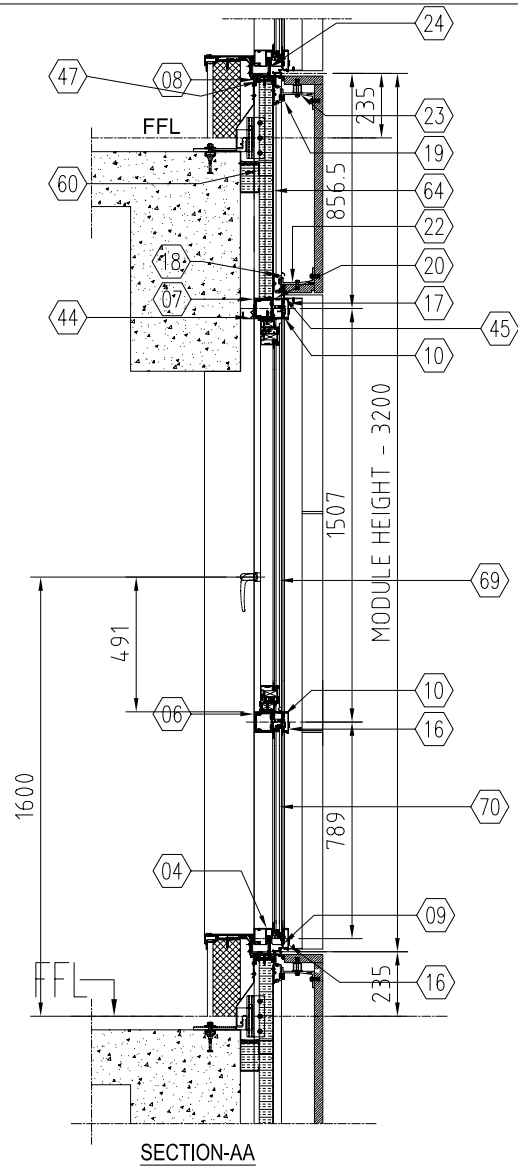
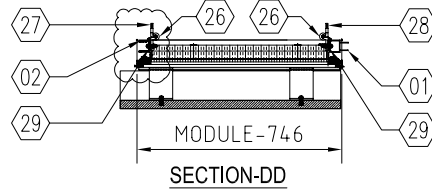
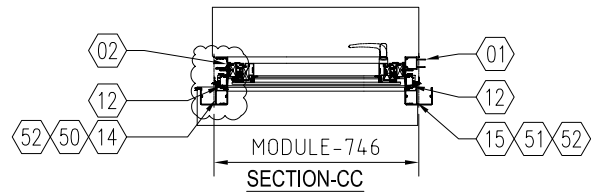
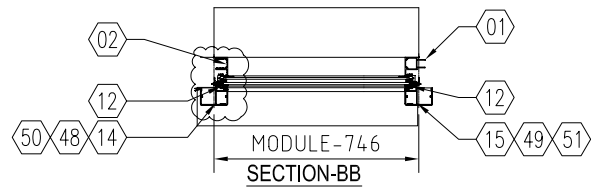
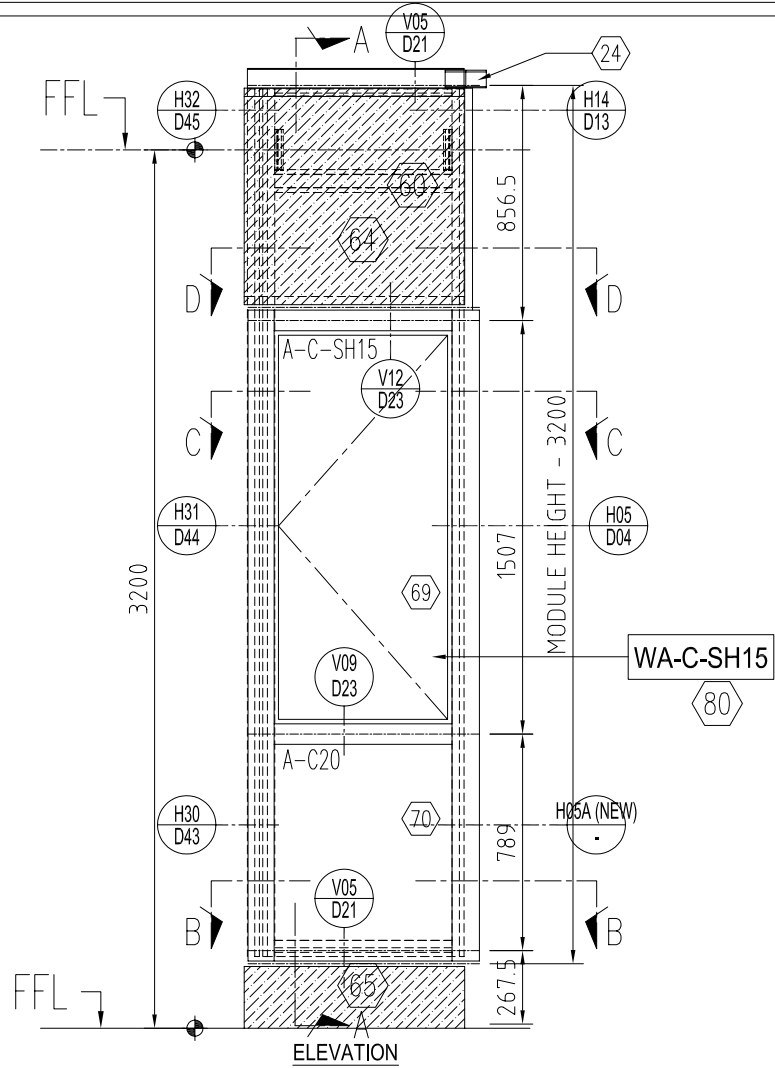
Project		CAPITAL PLAZA - ABU DHABI APARTMENT TOWER-A (ZONE-A6 (U25) LEVEL- 10~11)			
Drawing Title		PANEL ASSEMBLY DRAWING			
Date	23/08/08	Drawn	ANOOP	Checked	KA
Panel No.		A-SG-013B		Sheet	1/2
				Rev.	1

JOB NO.

G-0032

ITEM	PART NUMBER	DESCRIPTION	QT'Y/UNIT	DIM A.	DIM B.
56	G.I FLASHINGS				
57					
58					
59					
60		GI-HAT1-07-01	1.5MM. G.I. FLASHINGS	1	639
61	BACKPAN				
62					
63					
64		BP1-05-01	2MM. ALUMINIUM BACKPAN	1	644
65		-	-	-	-
66	GLASS	A-C-SH15	26MM. THK. DOUBLE GLASS UNIT (OPENABLE)	1	614
70		A-C20	26MM. THK. DOUBLE GLASS UNIT (FIXED)	1	677
71					
72	STONE	FOR STONE DETAILS REF. STONE SCHEDULE & STONE HOLE PRODUCTION DRAWINGS			
73					
74					
75					
76					
77	EPDM & GASKETS				
78					
79					
80		WA-C-SH-15	WINDOW ASSEMBLY	1	
81					
82					
83					
84					
85					
86					
87		03 AK 11001	VER. RAINSCREE GASKET	2	3250
88		03 AK 01002	HOR. RAIN SCREEN GASKET	1	3550
89		04 AK 11001	HOR. & VER. PRESSURE PLATE GASKET	1	6400
90		03 AK 01004	SKID BLOCK AT FEMALE MULLION	1	8200
91		03 AK 11002	GLAZING GASKET	1	2900
92		244101	GLAZING GASKET	1	2900
93					
94					
95					
96					
97		-	1.5mm THK. SELF ADHESIVE WATERPROOFING MEMBRANE	2	100
98		-	GLASS SETTING BLCOK 11MM THK. (FOR FIX GLASS)	2	100
99		-	GLASS SETTING BLCOK 5.5MM THK. (FOR WINDOW SHUTTER)	2	100
100		-	M12x8 ST STEEL GRUB SCREW WITH ALLEN KEY HEAD	2	-
101		-	M8x35MM. ST STELL BOLT & NUT WITH WASHER	6	-
102		-	M8 HB09 HAZ SUPER ANCHOR BOLT (FOR STONE FIXING)	4	-
103		-	M6x30 FIS V ANCHOR	2	-
104		-	M6x60 FIS V ANCHOR	2	-
105		-	ø4.8x38LG. CSK. SCREW	9	-
106		-	ø4.8x38LG. PH. SCREW	48	-
107		-	3.2 ø x 7 STAINLESS STEEL POP RIVETS (SSD42)	28	-
108		-	50x13x10THK RUBBER	1	

\* RELEASED ITEM



Project		CAPITAL PLAZA - ABU DHABI APARTMENT TOWER-A (ZONE-A6 (U25) LEVEL- 10~11)			
Drawing Title		PANEL ASSEMBLY DRAWING			
Date	23/08/08	Drawn	ANOOP	Checked	KA
Panel No.		A-SG-013B		Sheet	2/2
				Rev.	1

JOB NO.  
G-0032

## 9– SME Major Projects

## 9- SME Major Projects

“Swiss Middle East” Design office team was involved in many of the prestigious projects around the Glob.

Some of these projects are classified internationally among the tallest buildings in the world like “The Emirates Towers” in Dubai and “The kingdom Center” in Riyadh.

Our projects around the Glob cover The United Arab Emirates, Kingdom of Saudi Arabia and Kuwait, Bahrain, Qatar, UK, Denmark, Switzerland, US & Canada.

The following are samples of projects where SME design office team was involved.





**1 Yonge St**  
 **Toronto, Canada**






**250M Street**  
 **Washington DC, US**





# **Abito Apartments**

 Manchester, UK







# Acico Twin Towers

 Dubai, UAE




aloft

**Aloft Hotel**  
Abu Dhabi, UAE





# Al Rajhi Tower

 Riyadh, Saudi Arabia





# Al Wahda Towers

Abudhabi, UAE






**Beach Towers**  
Abu Dhabi, UAE






**Bluewaters Hospitality**

 Dubai, UAE





**Bluewaters Residence**

 Dubai, UAE





**Bolderwood**  
 Hampshire, UK





**Burj Views**  
Dubai, UAE





**Capital Plaza**  
Abudhabi, UAE





**Clock Tower**  
📍 Makkah, Saudi Arabia






**Doha Airport Skylights**  
Doha, Qatar






**Dubai Metro**

 Dubai, UAE





**Ecole Des Crets De Champel**

 Geneva, Switzerland






**Essex Crossing**  
New York, USA






**Etihad Towers**

 Abu Dhabi, UAE






**Fountain View**

 Dubai, UAE





**Four Seasons Hotel**

 Abudhabi, UAE






**General Aviation Jeddah Airport**  
Jeddah, Saudi Arabia



# Ghobash Tower

 Abudhabi, UAE






**Haskins Biotech Campus**  
San Francisco, US





HORIZON  
TOWER


# Horizon Tower

 Dubai, UAE






**Marriott Marquis Hotel**

 Dubai, UAE




**KAFD 1.10**

 Riyadh, Saudi Arabia






**KAFA 2.10**

 Riyadh, Saudi Arabia






**KAFD 4.10**

 Riyadh, Saudi Arabia






**KAFD 4.12**

 Riyadh, Saudi Arabia






# King Abdullah Children Hospital

 Jeddah, Saudi Arabia





**King Abdullah Foundation**

 Riyadh, Saudi Arabia






**King Abdullah Sports City**  
Jeddah, Saudi Arabia



# Maze Tower


 Dubai, UAE







## Mixed Use Facility Project

 Toronto, Canada





**Modern Times Hotel**  
Geneva, Switzerland






**Najmat Abudhabi Towers**  
Abudhabi, UAE





ASCOTT


**Park Place**

 Dubai, UAE






**Qatar International Islamic Bank**

 Doha, Qatar





**Reverso**

 Geneva, Switzerland






**Riyadh Metro**  
Riyadh, Saudi Arabia






# Rose Tower

 Dubai, UAE





**Senegal Airport**

 Dakar, Senegal




# Senegal Airport

Dakar, Senegal






**Tamkeen Tower**

 Riyadh, Saudi Arabia



**The Binary Office Tower**

 Dubai, UAE






**The Spring District**  
Washington, USA





**Waqood Tower**

 Doha, Qatar





**Water Fall Mall**  
📍 Kuwait City, Kuwait





**Webb House**  
London, UK









**ZIBI Block 211**  
 Ottawa, Canada





# Meydan Beach Hotel

 Dubai, UAE





بانک بین‌المللی افغانستان  
Afghanistan International Bank AIB

**Afghanistan International Bank**

Kabul, Afghanistan






**Burj Vista**  
Dubai, UAE






# Kifaf Towers

 Dubai, UAE






# The Spring District – Block13

 Washington, USA




**University of Toronto**  
 Mississauga, Canada






**First National Bank (FNB)**

 Pennsylvania, USA




**489 King Street**

 Toronto, Canada





**Sheraton Toronto Lobby**

 Toronto, Canada